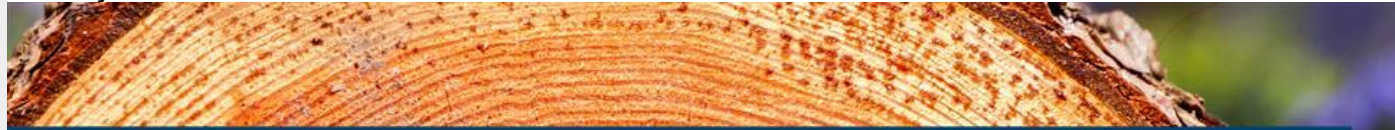


February 2021



Waukesha County Volunteer Newsletter

Dear Volunteer,

We hope you are staying safe and warm during this winter weather and cold temperatures. Although it may be hard to believe, Eras will soon be preparing for spring and warmer weather.

Welcome to the Eras Team, New Volunteers!

Thank you for giving your time to help support seniors and adults with disabilities in Waukesha County! The impact of your gift will be felt by all that you serve.

Mackenzie Norem
Gregg Saksefski
Ed Kamerling
Lynn Steffes

Rose Hartfield
Matt Slupski
John Holtan
Philip Steffes

Ryan Ross
Siya Mahajan
William Gottemoller



Eras Senior Network Continues to Follow CDC Guidelines for Social Distancing

A reminder to all volunteers that Eras continues to follow CDC guidelines for social distancing and does not recommend in-person visits between clients and volunteers. While many members of our community are able to receive the vaccine, the risk of transmission is still high. In-home visits are remaining paused until recommendations have changed in effort to protect both volunteers and clients.

If you have any questions about these guidelines please feel free to contact us.

Driving Policy Reminder

A reminder to all volunteer drivers that all rides (medical, grocery, or other) need to be organized through Eras. In order for volunteers to be covered under our agency insurance, Eras staff need to have documentation of your ride. We know many of you have developed a relationship with clients and they might call you directly to schedule rides. If you plan a ride on your own, we need either you or the client to call Eras and let a staff member know when and where that ride will be occurring.

Volunteer Needs

Unbox and Assemble Rowing Machine: A client in Waukesha is looking for a volunteer to remove a rowing machine (exercise equipment) from the box and assemble it (machine weighs approximately 200 pounds).

Refilling Wiper Fluid: A client in Pewaukee is looking for a volunteer to help refill the windshield wiper fluid in her car.

Remove Cardboard Boxes from Apartment: A client in Pewaukee is looking for a volunteer to remove a number of broken-down boxes from their apartment. They would like boxes removed and brought to the recycle bin.

If you are interested in any of these opportunities, please contact Shannon at (262) 522-2405 or Shannon.Fogle@Eras.org.

Snow Removal Volunteers Needed

The snow continues to accumulate and with that comes additional requests from our clients. Right now we have needs in Brookfield (2) and Pewaukee (1), but clients continue to reach out as the snow continues to fall.

Volunteers will be matched with a senior or adult with a disability in their community to remove snow from their driveway and sidewalk. Details can be coordinated directly with the person you serve. Enjoy the crisp winter weather as you provide this needed service to an individual that is no longer able to shovel snow due to age or physical condition. Qualifications: dependable, responsible, and a positive attitude. Must be 15 years or older (children younger may be accompanied by an adult). Also consider teaming up with a few people for this project and alternate throughout the season.

For more information, please contact Marisa at (262) 522-2402 or Marisa.Strothenke@Eras.org.

Card Decorating for Clients

Have you volunteered with our card decorating projects recently and have yet to drop off your completed cards? You can still return cards to either our Greendale or Waukesha offices Monday through Friday between 9am and 4pm. See below for addresses and contactless drop off instructions.

Greendale: Southwest Office, Northern Entrance of St. Alphonsus Parish, 5960 W. Loomis Road, Greendale, 53129. Drive to the back and enter the door marked Eras Senior Network in Building B6. A table will be inside the front door.

Waukesha: 2607 N Grandview Blvd, Suite 150, Waukesha, 53188. Come through door C on east side of building, table is at the top of the stairs. To access the elevator, enter through Door A.

If you are interested in decorating birthday and various holiday cards to be mailed throughout the year to our older adult clients, please reach out to Becca Snow at Becca.Snow@Eras.org or (262) 522-2409.



Community Needs

DHS Announces Weekly Newsletter to Keep Public Informed of COVID-19 Response and Vaccine Progress

Last week, the Department of Health Services (DHS) announced a newsletter the public can sign up for to get direct information about the COVID-19 response and vaccine rollout. Every Friday, a COVID-19 update newsletter will be sent via email to people who sign up. [Registration](#) is now open, and archived copies of the weekly newsletter will also be available.

No Flu for You!

[Learn more about the flu vaccine and its importance by watching this video from our community partner, ProHealth Care.](#) Also view the attached Waukesha County resource directory for more information.



The CDC recommends that everyone six months and older get a flu shot every year.

Contact your primary care provider or your pharmacist to schedule a flu shot today!

Or visit [VaccineFinder.org](https://www.vaccinefinder.org) to find a provider near you.



Have you submitted your hours?

Help us each month by reporting your hours. It's one of the ways we stay funded! Submit your hours on our [website](#) OR [email](#) them to us!

**Pen Pals and School Tutors do not need to submit hours. They are tracked by letters written and sign in sheets. If you have questions about submitting hours please [contact us](#).



2607 N Grandview Blvd, Suite 150 Waukesha, WI 53188
Eras.org • Waukesha: (262) 549-3348 • Milwaukee: (414) 488-6500



Attachments

 [Waukesha County Flu Vaccine Resource Directory - Flu Season 2020-21.pdf](#)

1K