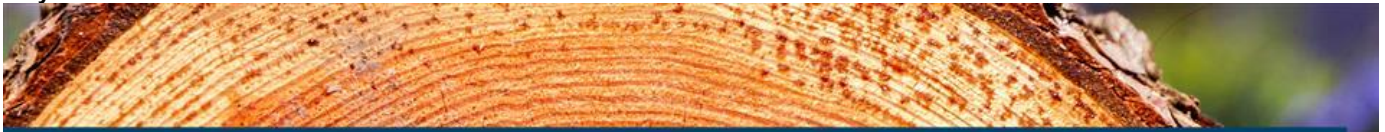


July 2021



# Milwaukee County Volunteer Newsletter

Dear Volunteer,

Summer is officially here, and so is the warm weather. We hope you were able to take advantage of the holiday weekend, spend some time outside, and connect with others.

## Welcome to the Eras Team, New Volunteers!

Thank you for giving your time to help support seniors in Milwaukee County! The impact of your gift will be felt by all that you serve.

Audra Eley  
Aaron Bynum  
Adrianna Simpson  
Sharon Livingston  
Victoria Larsen

Troy Ramey  
Hikeem Williams-Davis  
Casey Renn  
Roberta Weldon  
Vidalina Griffin  
Valerina Nikich

Iris Haberberger  
Marie Helfenstein  
Ike Eke  
Linda Wishman  
Shanell Taylor



## Eras Mask Policy

We know there has been some confusion with the new CDC recommendations, but we wanted to remind you that at this time, Eras Senior Network continues to require masks in our offices and during all volunteer activities.

## Update to Calling Clients Before Rides

We are now requesting volunteer drivers to call clients by 12pm the day before an event. If you are unable to call before noon the day before, please call two days in advance. Eras phones are open from 9am-4pm so we are making this change to allow more time to assist with any issues that may come up before the day of the event.

## Disabled Parking Permit

If you are signed up as an Eras Volunteer Driver, you have the option to receive a Disabled Parking Permit to assist with the transportation of clients. These permits can be used when clients are in the car with you, and you need closer access to the building doors. If you are interested in receiving one of these to aid in your volunteer service, please contact Marisa at (262) 522-2402 or [Marisa.Strothenke@Eras.org](mailto:Marisa.Strothenke@Eras.org).

## Volunteer Needs

### Yard Work and Lawn Mowing

**Outdoor Yard Work:** Clients throughout Milwaukee County are still in need of outdoor yard help this season. Below is a list of various tasks and locations that clients are currently in need of help.

- **Greenfield** (trim bushes around house)
- **Milwaukee** (trim bushes, rake and bag grass - has two rakes but no trimmer)
- **Milwaukee** (rake back yard- small area for one person)
- **Milwaukee** (add and level out soil for garden bed to sit on, dig a deeper hole and plant 3 plants, remove and transplant some plants, trim branches and edging on grass- volunteer will have to bring trimmers, touch up paint on fence)
- **Whitefish Bay** (pull weeds, trim evergreen bushes)

If you are interested in volunteering please contact Suzy at (414) 488-6500 ext. 6504 or [Suzanne.Endres@Eras.org](mailto:Suzanne.Endres@Eras.org)

**Lawn Mowing:** Clients throughout Milwaukee County are in need of lawn care this summer. Volunteer to be matched with a client and help them mow their lawn throughout the season. This opportunity is flexible around your schedule and dependent on how fast the grass grows! Below is a list of locations that clients are currently in need of help.

- **Cudahy** (1 client - has working lawn mower)
- **Milwaukee** (4 clients - one does not have a lawn mower, one has a manual lawn mower, two are unknown)
- **Oak Creek** (1 client - unknown if client has a lawn mower)
- **South Milwaukee** (1 client - has a working lawn mower)

If you are interested in volunteering please contact Sophia at (414) 488-6929 or [Sophia.Franklin@Eras.org](mailto:Sophia.Franklin@Eras.org).

## Free Registration Now Available for Annual Tapestry Event and Fundraiser



# Annual Tapestry Event and Fundraiser

Thursday, September 30, 2021

Live music starting at 5:30 PM | Program 6:00 - 7:00 PM



Our Annual Tapestry Event and Fundraiser will be virtual again in 2021. We invite you to join us on September 30th for music, a short program, and two entertaining breakout sessions. Funds raised support the programs of Eras Senior Network, serving over 2,600 older adults and adults with disabilities in Milwaukee County and Waukesha County.

Online registration is free and available now! [Click HERE](#)

## Seeking Auction Items for Tapestry Fundraiser Event

The Tapestry Event is Eras Senior Network's biggest fundraiser each year. All funds raised at the event go towards supporting our programming. The 2021 event will be held on Thursday, September 30, 2021. Please consider donating items for this event.

### Silent Auction Item Ideas (Valued \$100 - \$200)

- Popular gadgets (air fryer, KitchenAid Mixer, Apple Watch, Dyson Vacuum)
- Gift certificates/cards for local restaurants, massages, car detailing, Door Dash)
- Gift cards for future travel (Airbnb, Southwest Airlines)
- Gifts for kids (puzzles, collectables, games)
- Workout equipment (dumbbells, yoga mat)
- High quality jewelry and handbags
- Experiences (nice restaurants, event tickets, theatre tickets, kids events)
- Basket of local favorites (cheese, beer, wine, spices)
- Handmade artwork, photography, quilts

### Silent Auction Item Ideas (Valued \$500+)

- One-of-a-kind items (autographed sports memorabilia, etc.)
- Patio sets for garden, deck, or porch
- Use of cabin or other vacation home (local or national)
- Vacation experience in Chicago or Wisconsin Dells
- Tickets or box seats to a sporting event or show (i.e. 4 Marquette tickets)
- Culinary Experience (Chef-made meal for 8, exclusive tour of restaurant with dinner)
- Unique Experience (Hunting or fishing with a pro, backstage tour, celebrity meet and greet)

Thank you for your consideration. Every donation helps get us closer to our fundraising goal and continues to support our programs. If you have questions or would like to donate, please contact Development Manager Becca Snow at (262) 522-2409 or at [Becca.Snow@eras.org](mailto:Becca.Snow@eras.org).

## Holiday Giving Program 2021

Even amid a pandemic, last year's Holiday Giving Program was a huge success! With so many generous donations from partners throughout Milwaukee County and Waukesha County, we were able to provide 890 low-income seniors with self-sufficiency care packages valued at \$60 each. These packages included gift cards to local grocery stores and pharmacies, a book of stamps, and a hand-decorated holiday card.

We hope to continue bringing a bit of holiday cheer to clients in need this year with the help of the community and our local partners. Due to the uncertainty of COVID-19, we will be mailing our gifts again this year and focusing on the most basic needs. Below is our wish list:

- Books of Forever Stamps
- \$10 Walgreens Gift Cards
- \$10 Pick 'n Save Gift Cards
- \$10 Walmart Gift Cards



Unwrapped items and money collected to purchase gifts are due by December 13<sup>th</sup>, 2021.

**Mailing Your Donation:** If you are able to mail your donation to us, please do so to help with social distancing. Donations of items or funds to purchase items can be mailed to:

Eras Senior Network (Attn: Becca Snow)  
2607 N Grandview Boulevard Suite 150  
Waukesha, WI 53188

### **Dropping Off Your Donation or Scheduling a Pick-Up:**

**Waukesha County:** Donations may be dropped off at our Waukesha office (same address as above) Monday through Friday between 8:30am and 4:30pm. Please note, during this time, all visitors entering the office building and Eras suite are required to wear a face covering. We are happy to coordinate a curbside pick-up if you would prefer to remain in your vehicle.

**Milwaukee County:** Donations may be dropped off at our Milwaukee County office located in the YWCA between 9:00am and 5:00pm. Please reach out to [Vanessa.Harris@Eras.org](mailto:Vanessa.Harris@Eras.org) to schedule a time for your drop off. Please note, all guests entering the YWCA are asked to wear a mask at this time. We are happy to accommodate a curbside pick-up if you would prefer to stay in your vehicle.

Eras Senior Network c/o YWCA  
Attn: Vanessa Harris  
1915 N Doctor MLK Drive  
Milwaukee, WI 53212

Thank you for your consideration in supporting our Holiday Giving Program! Please contact Becca Snow at (262) 522-2409 or [Becca.Snow@Eras.org](mailto:Becca.Snow@Eras.org) with any questions or click [HERE](#) to learn more.

## Community Needs

### Exploring Caregiver and Patient Support During the Inpatient Discharge Process

Eras Senior Network is partnering with Froedtert Health and the Medical College of Wisconsin (MCW), the University of Wisconsin-Milwaukee (UWM), and the Aging & Disability Resource Center of Waukesha County on a research study to better understand the current inpatient discharge process and experience for patients, families, and providers. A clear understanding of the discharge process is critical to ensuring that the transition from hospital to home or other care setting is safe and accurate.

To learn more, see PDF attached to this email.

## Have you submitted your hours?

Help us each month by reporting your hours. It's one of the ways we stay funded! Submit your hours on our [website](#) OR [email](#) them to us!

\*\* If you have questions about submitting hours please [contact us](#).



2607 N Grandview Blvd, Suite 150 Waukesha, WI 53188  
Eras.org • Waukesha: (262) 549-3348 • Milwaukee: (414) 488-6500



### Attachments

 [01072021122947 Exploring Caregiver and Patient Support During the Inpatient Discharge Process.pdf](#)

1K