

December 2021



Community Newsletter

Engaging & Supporting Seniors During COVID-19



A Big Thank You To Everyone Who Made Holiday Giving 2021 A Success

Thank you to all who supported our 2021 Holiday Giving Program! Because of you, we were able to mail **880 recipients a holiday gift including more than \$50 in gift cards and stamps** in a handmade holiday card. But more than that, older adults living in Milwaukee County and Waukesha County were reminded that they are important to the community.

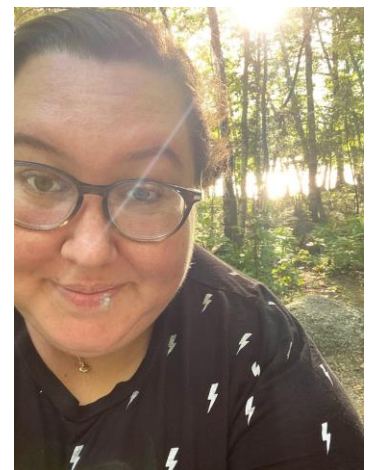
Thank you so much!

Welcome Sarah to our Milwaukee County RSVP Team

Sarah Kiefer is a Milwaukee transplant from La Crosse, WI. She lives in the Riverwest neighborhood with her husband, Chris, and their cat, Loki. She recently graduated from Arizona State University online with a BA in Education. She is excited to work in the nonprofit sector of Milwaukee County helping older adults!

Sarah works out of the YWCA office along with Britney Woods, RSVP Volunteer Coordinator, and Gabby Huff, our Milwaukee County RSVP Program Director.

You can contact Sarah at (414) 488-6931 or Sarah.Kiefer@eras.org.





Welcome Britney to our Milwaukee County RSVP Team

Britney Woods is a Racine, WI native whose been living in the Milwaukee area for five years. She graduated from UW-Parkside with a major in Communication and a minor in Ethnic Studies. She is passionate about her community and helping others.

Britney works out of the YWCA office along with Sarah Kiefer, RSVP Volunteer Coordinator, and Gabby Huff, our Milwaukee County RSVP Program Director.

You can contact Britney at (414)-488-6931 or Britney.Woods@eras.org.

Become a Volunteer Driver for Eras Senior Network

Volunteer drivers at Eras make it possible for local seniors and adults with disabilities to get to their medical appointments, as well as provide a way for clients to receive groceries and food pantry stock boxes through contactless delivery.

The pandemic has affected the number of volunteers able to help, but those with the capacity to continue volunteering have gone above and beyond to support our clients. Many volunteers have taken on double - or even triple - their normal amount of rides to ensure our clients receive the services they need.

If you or someone you know is interested in becoming a volunteer, please contact:

Milwaukee County: VolunteerMilwaukee@eras.org or (414) 488-6930

Waukesha County: Marisa Strothenke at Marisa.Strothenke@Eras.org or (262) 522-2402

The Flu and Older Adults

Adults 65 years and older are at a higher risk of developing serious flu complications. It's important for everyone to do their part to stay healthy this flu season. Prevent the spread of flu and other respiratory illnesses:

- **Mask Up:** Cover your nose and mouth with a mask when out in public.
- **Lather Up:** Wash your hands frequently with soap and water.
- **Sleeve Up:** Roll up your sleeve to get a flu shot.

The more people vaccinated against flu, the more people protected from flu. Learn more at: <https://www.cdc.gov/flu/season/protect-your-health.html> and <https://www.cdc.gov/flu/highrisk/65over.htm>



Read our December Client Newsletter

Eras Senior Network mails a hard copy client newsletter to 4,000 older adults in Milwaukee County and Waukesha County four times a year. We invite you to read our latest client newsletter by clicking [HERE](#).

Past newsletters can be found on our website by clicking [HERE](#).



Read Our 50 Plus News Magazine Article: People Living With Disabilities

Each month, Eras Executive Director, Kathy Gale, shares an article with 50 Plus News Magazine. This month, read about how important accessibility is for everyone.

[CLICK HERE](#) to read the article.



We'd Love to Connect With You: Virtually or In-Person!

We have started meeting with our community partners in person again. Our staff will continue to wear masks while inside but are happy to be able to bring our in-person programming back to the community.

- **Eras Presentation:** We would love the opportunity to present information about Eras Senior Network during a church service or small group gathering.
- **S.T.O.P. Senior Frauds and Scams Presentation:** Learn about popular scams targeting the senior population during our 1-hour presentation for seniors and caregivers.
- **Meeting With You:** Would you like to talk one-on-one about how our organization can provide support for older adults in your congregation or community group? We would be happy to set up a telephone call, video call, or in-person meeting.
- **Booth at Event:** We would love to share our resources with the community by having a booth at your event or church service.



Milwaukee County:
Vanessa Harris
Milwaukee County
Outreach Manager
(414) 488-6780
Vanessa.Harris@Eras.org



Waukesha County:
Heather Uzowulu
Development Director
(262) 522-2404
Heather.Uzowulu@Eras.org



Eras Senior Network

Milwaukee County Main Office: c/o YWCA, 1915 N Doctor MLK Jr Drive, Milwaukee, WI 53212

Waukesha County Main Office: 2607 N Grandview Boulevard, Suite 150, Waukesha, WI 53188

(414) 488-6500 • (262) 549-3348 • Eras.org

